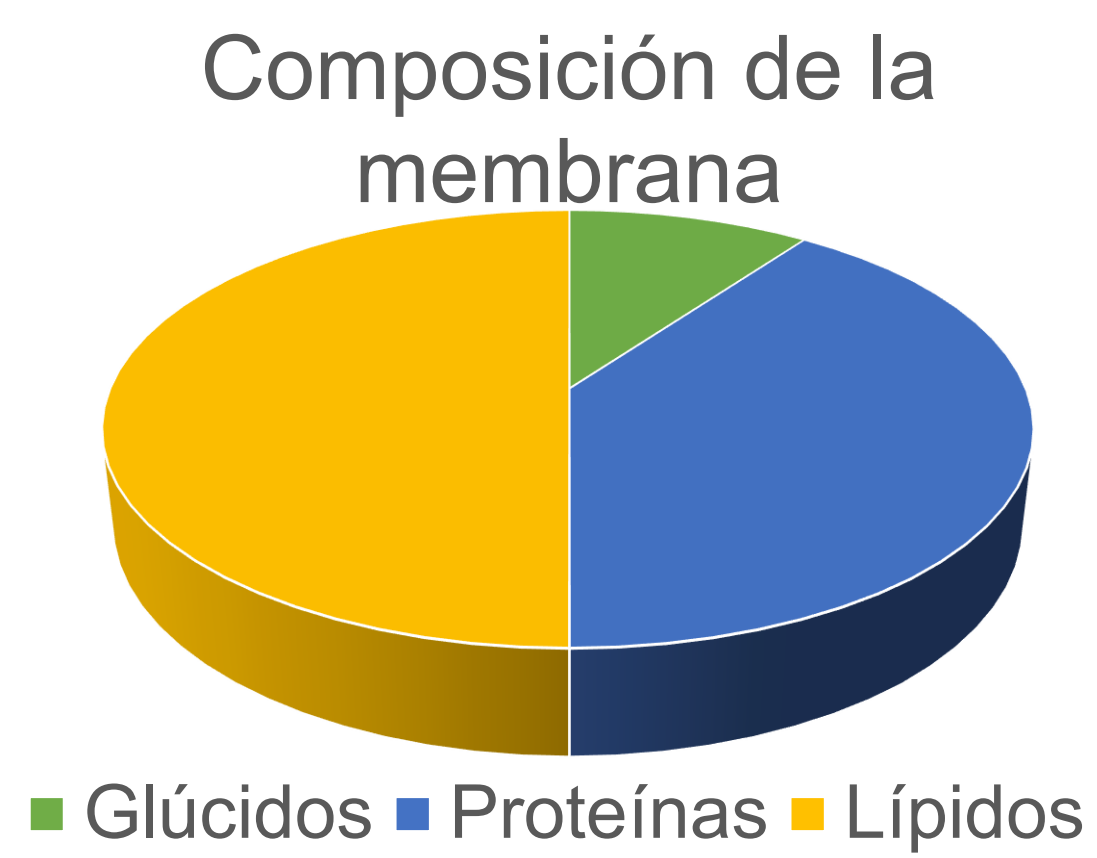
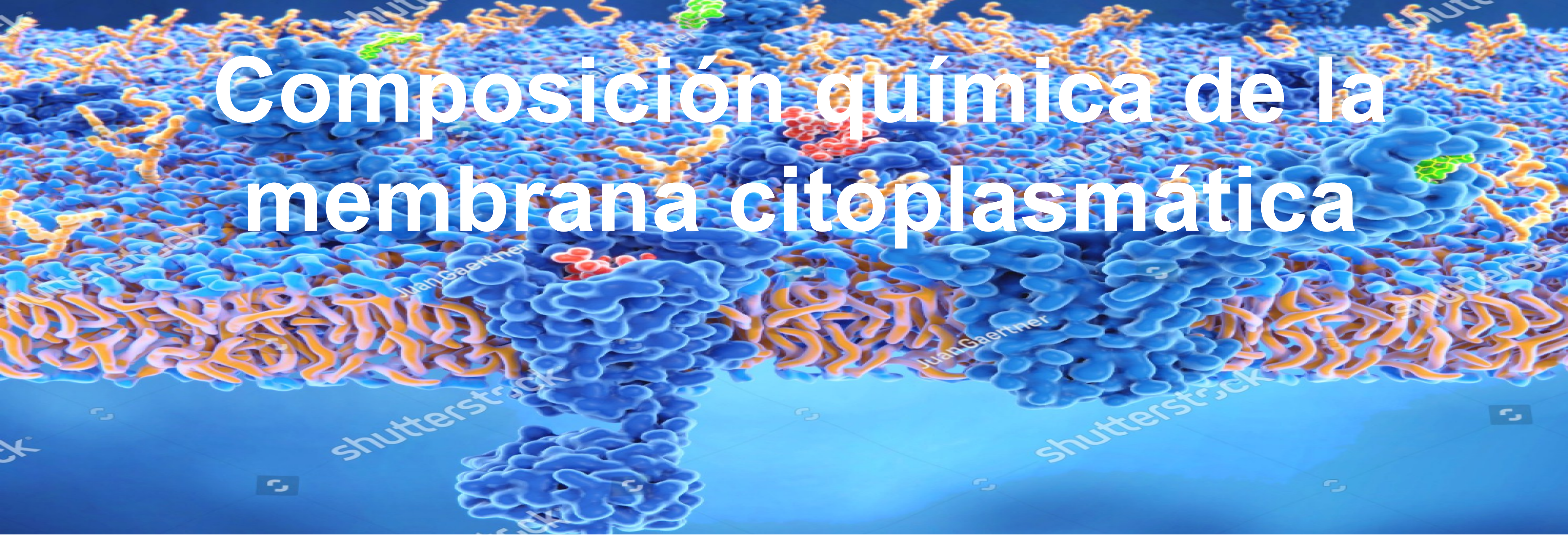
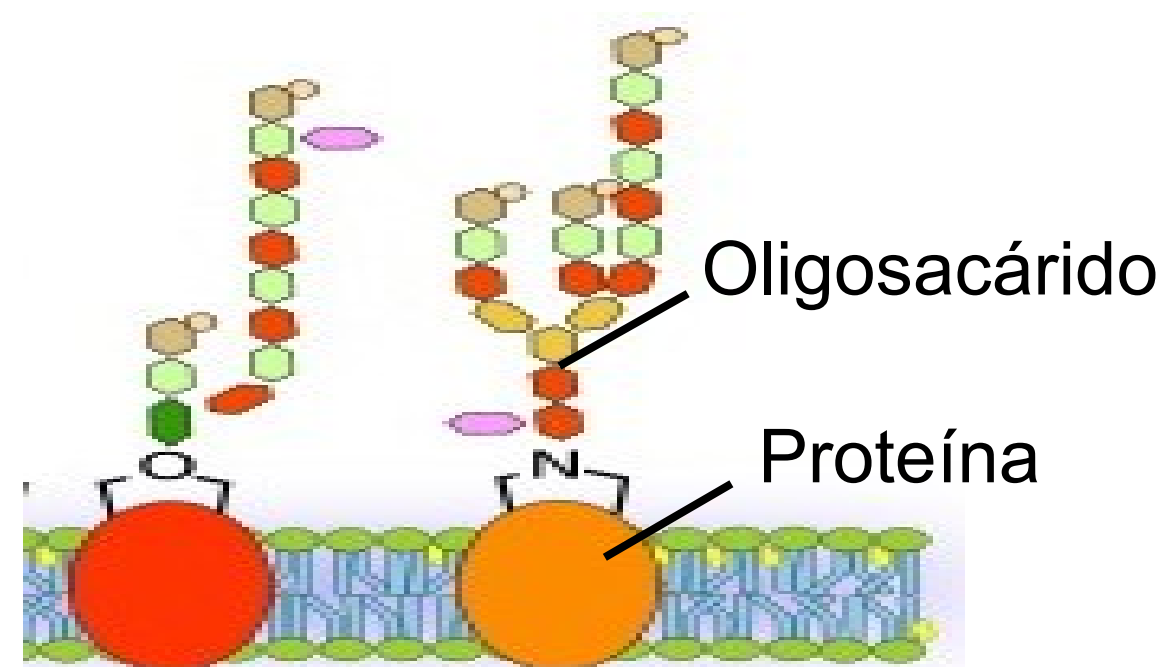


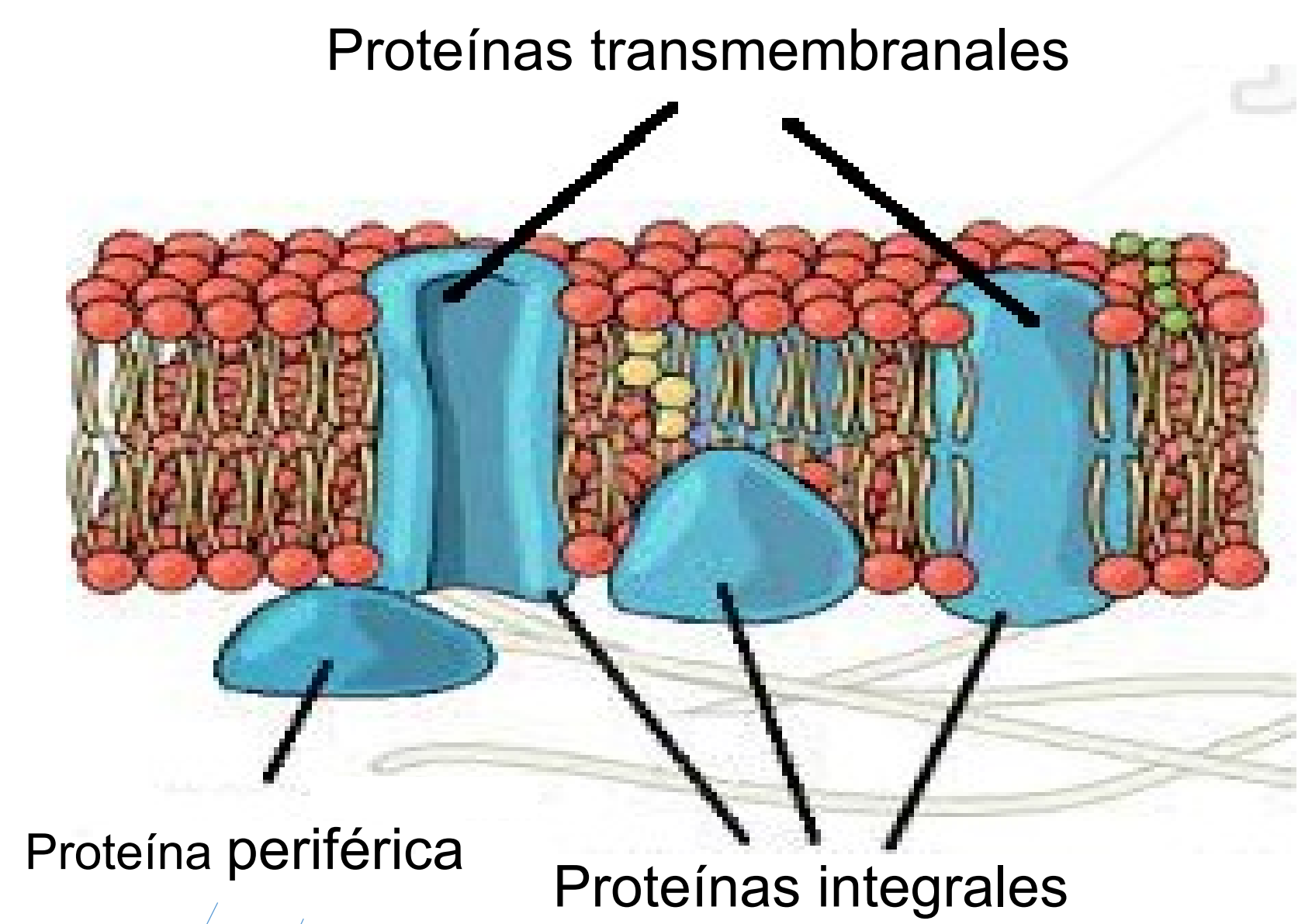
# Composición química de la membrana citoplasmática



■ Glúcidos ■ Proteínas ■ Lípidos

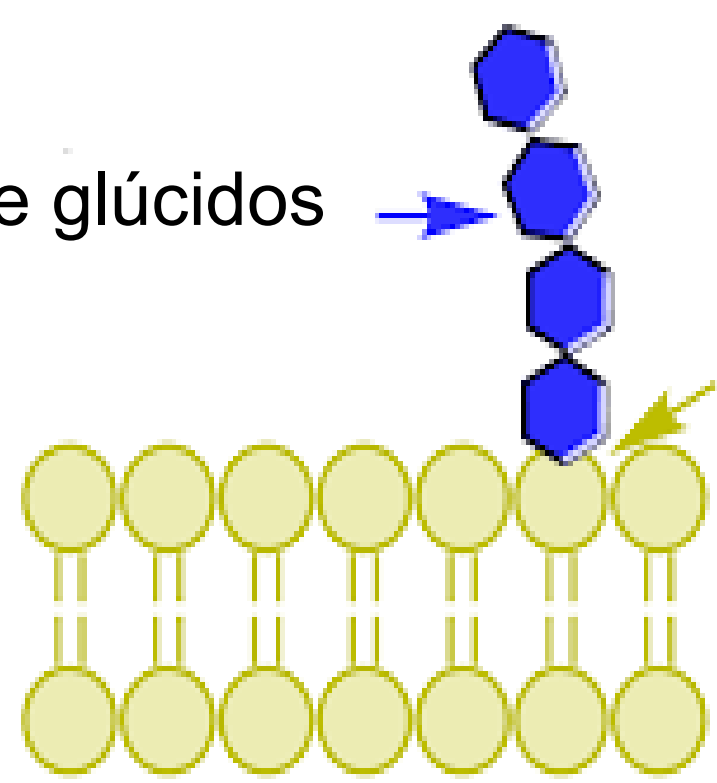


Glicoproteínas

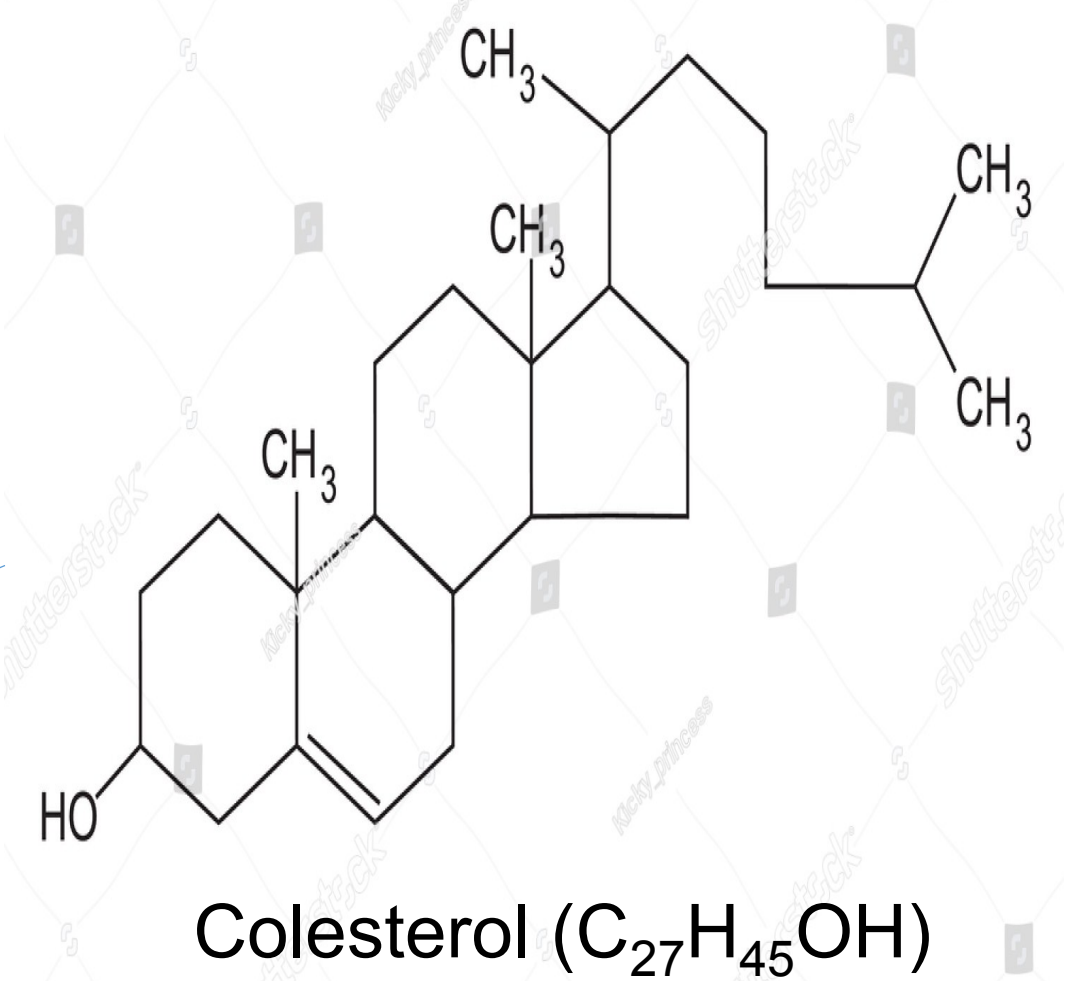
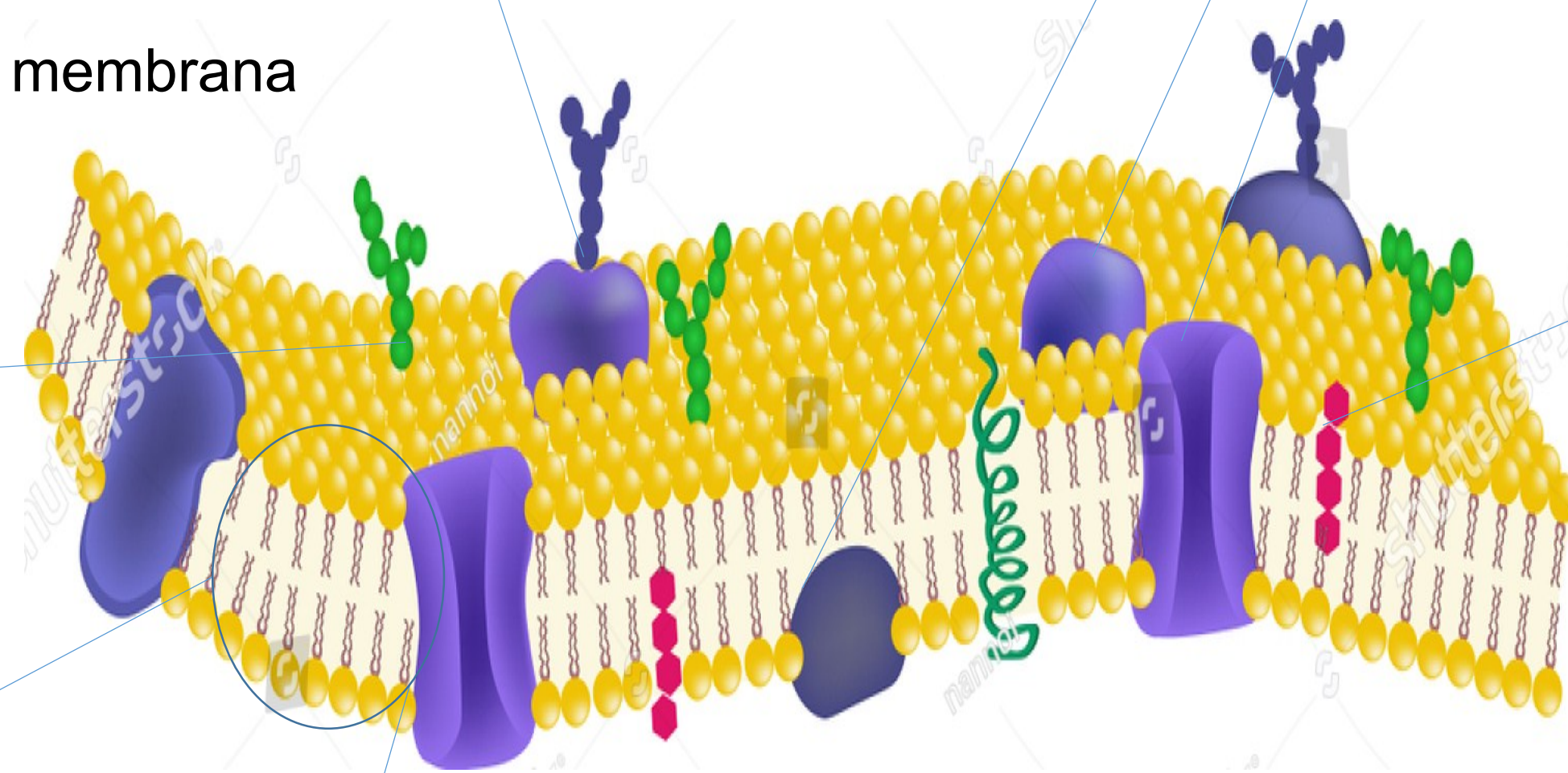


Glucolípido

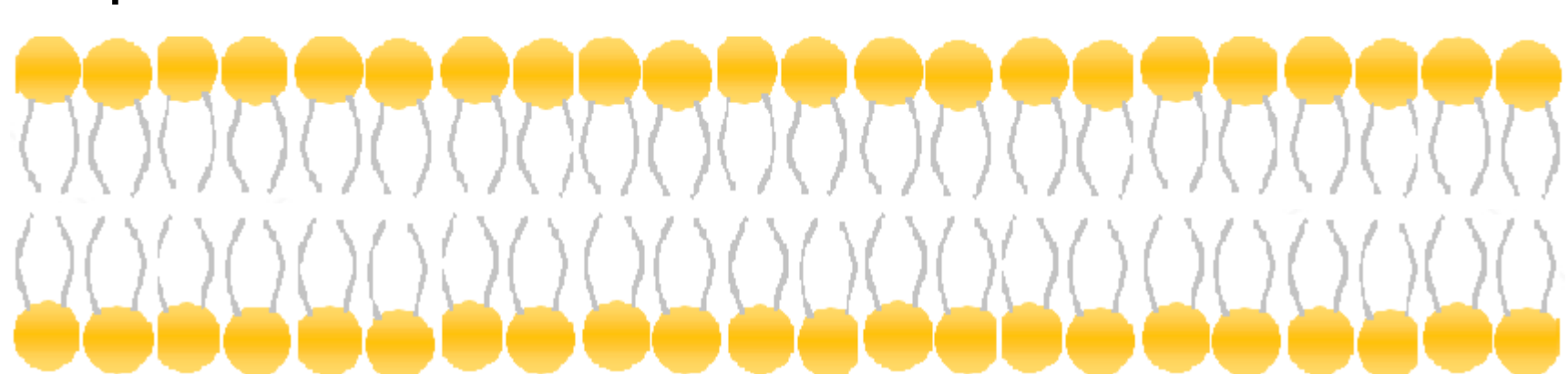
Residuos de glúcidos



Lípidos de membrana



Superficie extracelular



Superficie intracelular

Bicapa lipídica



Fosfolípido

Cabeza hidrofílica

Cola hidrofóbica

